

Geveke Pump Service



Full servicing for your pump

Pumps are the core of the production process. The better the pump functions, the more efficiently your process will run. Regular maintenance reduces the risk of costly disruptions, and in case something goes wrong, you want to be able to rely on a trustworthy partner.

Geveke's specialists work together with you and always provide objective advice. We have been delivering industrial goods and services ever since the company's foundation in 1874. Thanks to our extensive experience with pumps, we can identify problems quickly and find a suitable solution.

Geveke services almost all types of pumps, including those from premium manufacturers such as Lewa, Nikkiso and Sundyne. With our 24/7 service, well-equipped workshop and specialist engineers, we have everything to provide you with a complete service. Geveke is ISO 9001:2015, VCA* 2017/6.0 and IECEx certified.



Sundyne ***ANSIMAG***



Our specialists are here for you



Maintenance

Geveke offers bespoke maintenance agreements, that are tailored to your production process. During maintenance, we analyse the status of the pump. In doing so, we can detect problems at an early stage and replace wearing parts on time.



Repair

We can repair pumps on your premises or in our workshop in Amsterdam. We can balance components and align, analyse and test pumps extensively. Because our service technicians are trained by the pump manufacturers, they are aware of the latest technological solutions.



Parts

We only make use of original parts and keep a wide range in stock. Our experts can put together service kits that you can manage on your premises, and, thanks to overnight stocking, our service technicians always have a sufficient supply of parts in their service van. Geveke is able to deliver parts quickly, so there is minimal downtime in the event of problems.

Maintenance

Regular inspections of your pump are the key to a safe and efficient production environment. Geveke provides customised servicing for every process. You can hire a service technician in the event of disruptions, or opt for the security of a maintenance agreement in which we establish inspection, maintenance and repair intervals.

Inspections

- Thorough inspection of your pump
- You will receive maintenance advice based on the pump inspection
- Fees and costs of material are included in the maintenance advice

Preventive maintenance

- Yearly maintenance service for a fixed price
- Parts, fees and travel costs are included in the fixed price
- Additional activities will be carried out when mutually agreed

Full service

- Bespoke agreement on planning and cost estimates for corrections, overhauls and replacement
- Ongoing monitoring of the pump with planned checks
- Management, selection and installation of parts fully taken care of

Benefits

- Recurring expenses remain low
- Problems are detected at an early stage
- Maintenance costs can be calculated in advance

Benefits

- Fixed recurring expenses
- Issues are resolved during maintenance
- No extra transport costs for parts
- Additional maintenance can be scheduled timely

Benefits

- Fixed maintenance costs
- Pump is checked on a regular basis
- Replacement parts are installed in a timely manner
- Planning and administration are fully taken care of
- Maintenance is supervised by pump engineers



Every agreement offers you:

- * 10% discount on fees for pump servicing included in the service agreement
- * Free advice over the phone from our Technical Support Engineers
- * 24/7 service in case of emergency on +31 (0)20 582 26 40
- * Highest priority in case of malfunctioning



Why choose a service agreement?

With a bespoke service agreement, you will extend the lifespan of your pump and save costs in the long run. In most companies, malfunctions, downtime and emergency repairs cause the biggest unexpected costs. If you opt for regular inspections or constant

monitoring of your pump, problems will be detected in time. Your pump will be serviced regularly and you will receive advice about repairs to schedule and any necessary replacements. This ensures that the costs stay within your maintenance budget.

Geveke only works with certified service technicians who are trained by pump manufacturers. We only use original parts. We can advise you on the supply of spare parts to keep on your premises, which we can restock automatically. With a full service agreement we take care of the A to Z of your pump maintenance, including planning and administration. This means that you do not have to enlist an employee for those tasks.

Product training

We offer product training for your employees. Your operators and maintenance personnel will learn how the pump works and how to recognise wear and tear.

Your staff also learn to perform basic maintenance on the pump. They can refresh oil, repair small leaks, or determine that a service technician is needed to solve the problem. Training can be carried out at Geveke's workshop or on your premises.

Installation

Geveke can install your pump for you. Whether it is a completely new installation, a replacement or overhauled pump, a certified service technician will ensure correct installation. Laser equipment will determine the right alignment.

Repairs

When all of your servicing is taken care of by one partner, your costs will be clear and manageable. Geveke Pompen has a well-equipped service workshop where we can service a variety of pump types from A to Z.



Balance components

We can dynamically balance components like axes, fans and inducers on our balancing machine.

Clean room

Pumps that need an completely oil- and grease-free treatment are taken to the clean room to be serviced by specially trained technicians. The clean room operates under overpressure and has an ultrasonic cleaning tank, a separate rinse tank and specialised tools. The clean room complies with ISO 14644, part 1, class 7 and the filters are HEPA class 14.



Vacuum oven

The drying oven is intended to dehumidify pump components. This is especially important for canned motor pumps and cryogenic pumps. We can place a complete pump in the oven and fully dehumidify it, under a vacuum and at a variable temperature. The vacuum is then filled with nitrogen. This guarantees that no moisture is left in the mechanical and electronic pump components.

Blasting

To remove corrosion, paint residue and other pollution from pump parts, we place them in our blast cabinet. The parts are carefully blasted to prepare them for a fresh coating.



Coating

We can apply different kinds of coatings to pumps and pump parts in our coating room.



Engraving

We create name tags for pumps and pump systems using our engraving machine. A steel name tag ensures that the correct information is always visible. Logos and serial numbers are also engraved in the name tags.

Testing

Geveke's workshop in Amsterdam includes an extensive test installation for pumps. You can attend the tests in person or virtually. Afterwards you will receive a test report with the results.



- Testing in three locations simultaneously, no waiting time
- Testing with water from a 22,000-liter circular storage tank
- Two hydraulic lifting tables, each able to lift 2,000 kilos
- Pumps heavier than 2,000 kilos can also be tested

Testing takes place with low-chloride water from a 22,000-liter storage tank, which is filtered and re-used after testing. There are three locations to test pumps. Pumps up to 2,000 kilos will be placed on the hydraulic lifting tables and heavier pumps can be tested next to them. Because the test installation is spaciouly designed, the pumps are easily accessible.

Each of the three testing locations has a frequency converter, which can vary the rpm of each pump independently. Recorders measure the pressure and flow of the pump. These are displayed on the test installation's monitor. In addition to capacity and head, we can also measure vibration and sound.



- Maximum pressure 500 bar
- Maximum pump power 132kW
- Maximum pump capacity 250 m3/hr
- Pressure and flow are displayed directly on the monitor

Analysis

During installation, repair and maintenance, it is important to determine the status of the pump. Geveke has specialist measuring equipment that enables you to display the current condition of your pump and pump parts.

Vibration analysis

The purpose of a vibration analysis is to determine the pump condition. We can do this on your premises or at our workshop using a portable analysis tool. Our service technicians are trained to interpret the results of the vibration analysis and find the cause of the vibration.



Alignment

The performance of the pump is, to a large extent, determined by the alignment. We have laser alignment equipment that ensures optimal alignment during the installation of pumps and drives. Precise laser alignment reduces vibrations and makes the pump more silent. It reduces the risk of leaks and slows down the wear of rotating parts. Lastly, correct alignment reduces energy consumption and extends the pump's lifespan.





Checking mechanical seals

We use monochromatic light to check that the faces of mechanical seals are completely flat.



Lewa diagnostic kit

Geveke has diagnostic equipment for almost any type of Lewa pump. While the pump is running, the diagnostic equipment determines the pump condition in real time. Wear on process valves and hydraulic parts is one of the problems that can be detected. Diagnostics help to efficiently plan corrective maintenance and prevent further problems, which minimises the risk of downtime and limits operating expenses.

If you would like to have diagnostics run on your Lewa pump, or if you would like more information, please contact Geveke Pompen:

+31 (0)20 582 26 42
pumprepair@geveke.com

Service partners

For the most efficient servicing of your pump, choose a certified partner. As the official Authorised Service Centre for Sundyne, Lewa and Nikkiso, Geveke offers guaranteed quality. Our product specialists and service technicians are trained in the latest standards and are continuously updated by the pump manufacturers.



Sundyne

Sundyne produces pumps and compressors for a wide range of applications, for example the Sundyne high-speed centrifugal pumps. Ansimag's and HMD's sealless magnetic drive pumps and Marelli's centrifugal pumps are also part of the American Sundyne Group. Geveke sold the first Sundyne pump in the Netherlands in 1964. In 1970, Sundyne set foot in Europe by opening a factory in France.



Lewa

German manufacturer Lewa is known for its membrane and plunger type dosing and process pumps. These are suitable for precision dosing and high-pressure applications. Lewa was founded in 1952. Geveke has been selling Lewa pumps and pump parts as a partner since 1956.



Nikkiso

Japanese concern Nikkiso manufactures pulsation-free dosing pumps and sealless canned motor pumps for hazardous media. Nikkiso is also the forerunner when it comes to cryogenic centrifugal and positive displacement pumps for liquid gases such as LNG and H₂. Geveke has been a supplier for Nikkiso since 2016, which was founded in 1953.



Sundyne assembly table

As an Authorised Service Centre for Sundyne, we have specialised tools to provide optimum servicing for Sundyne pumps and compressors. One example is our assembly table for Sundyne gearboxes. The table can be rotated so that our service technicians can take a close look at all the gearbox' angles.



European stockholder Ansimag

Geveke is the official European warehouse distribution centre for Ansimag pumps. This means we can deliver Ansimag's magnetically coupled centrifugal pumps to all of Europe from our workshop in Amsterdam. Because we keep a wide variety of models in stock, we can deliver at short notice.



Nikkiso E monitor

Nikkiso canned motor pumps can be fitted with an E monitor. The monitor has an LED-display that shows the status of the axial and radial bearings and the pump's direction of rotation. Thanks to the E monitor, the replacement of bearings that start to wear can be scheduled on time.

Parts

Pumps have a long lifespan if you replace the wearing parts in time. Geveke only uses original parts. Our spare parts department has decades of experience with selecting parts for pumps and pump systems. We keep an extensive range of parts in stock at our warehouses in Amsterdam and Vilvoorde, but we can also deliver directly from the pump manufacturer. Our efficient logistics network ensures swift delivery of the parts.



Service kits

We can put together a service kit for you to manage on your premises. Our spare parts specialists advise you about which and how many parts to keep in stock, so all essential parts are present in case of maintenance or repairs. This stock can be replenished automatically.

As part of this service we handle the inventory, the ordering process and the administration of the spare parts.

Our spare parts specialists have years of experience in putting together custom-made service kits for a wide variety of industries.

Overnight supply

Geveke's service technicians are supplied with new parts overnight before the start of each workday. A specialised courier loads the parts into the vans of our service technicians, who live in different regions. In case of failure, our service technicians have everything on hand to help you.



Contact

The Netherlands Geveke main office

Kabelweg 51
1014 BA Amsterdam,
The Netherlands
PO Box 820
1000 AV Amsterdam,
The Netherlands
+31 (0)20 582 91 11
info@geveke.com
www.geveke.com

The Netherlands Geveke service workshop and warehouse

Contactweg 44
1014 AN Amsterdam,
The Netherlands
+31 (0)20 582 91 11
info@geveke.com
www.geveke.com

Belgium Geveke main office

Leuvensesteenweg 248B
1800 Vilvoorde, Belgium
+32 (0)2 257 02 30
info@geveke.com
www.geveke.com

Emergency number

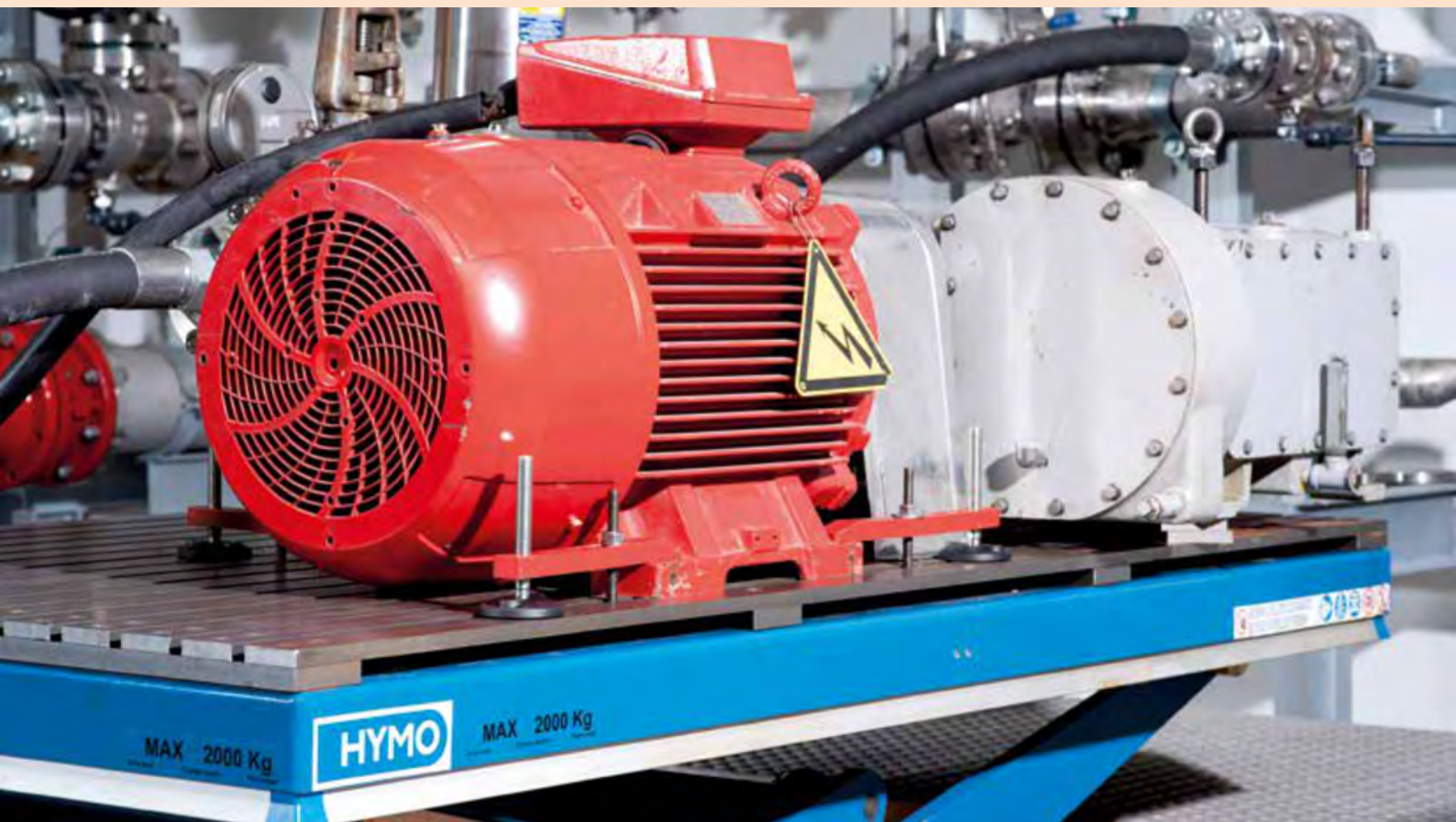
+31 (0)20 582 26 40

Info about spare parts

+31 (0)20 582 22 45

Info about pump diagnostics

+31 (0)20 582 26 42
pumprepair@geveke.com





Geveke Pompen

Kabelweg 51
1014 BA Amsterdam
The Netherlands
+31 (0)20 582 9111
info@geveke.com
www.geveke.com

